

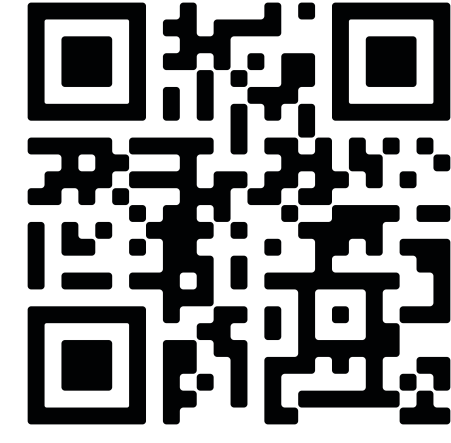
Chronic Low Back Pain?

IT MAY BE CAUSED BY NEUROMUSCULAR DYSFUNCTION

Ask about the **only Restorative FDA-approved therapy for Chronic Low Back Pain**

RESTORE CONTROL | RESTORE FUNCTION | RESTORE STABILITY

ReActiv8® Life



Learn the Science Behind Neuromuscular dysfunction & Restorative Neurostimulation,
Hear stories from ReActiv8 Patients

Clinical Cues

Do these symptoms sound familiar?



Do you have **back pain, muscle spasms, or feelings of instability often?**

Do they seem to be getting worse with time?



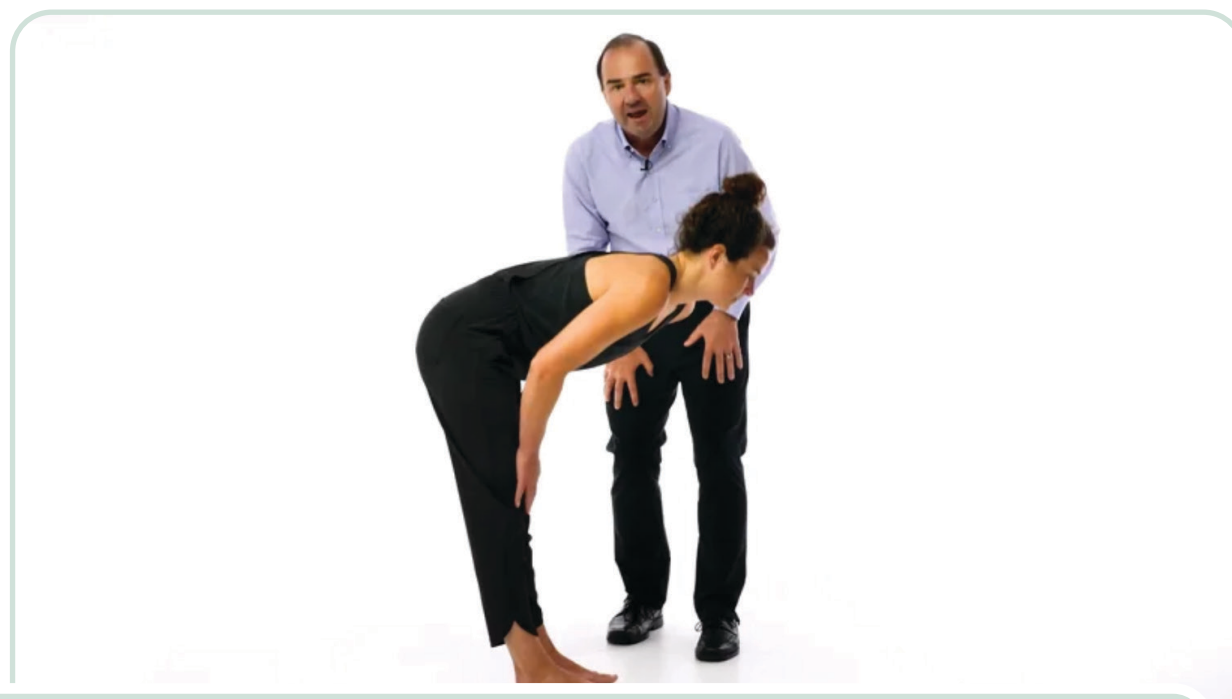
Do you **experience back pain or spasms** when doing **small tasks** like brushing teeth over a sink, washing dishes, or reaching for an item?



If you stay in a **position for an extended period** (sitting, standing, driving, etc.) does your back become **increasingly painful?**

Do you have to shift positions or support yourself with your arms because of the pain?

Physical Assessments



Multifidus Toe Touch Test (MT3)
Test for motor control dysfunction

- Check for pain or weakness during simple forward bending
- Attempt to touch toes and straighten back up
- Pain or trouble straightening up = motor control problems in back



Prone Instability Test (PIT)
Test for painful dynamic instability

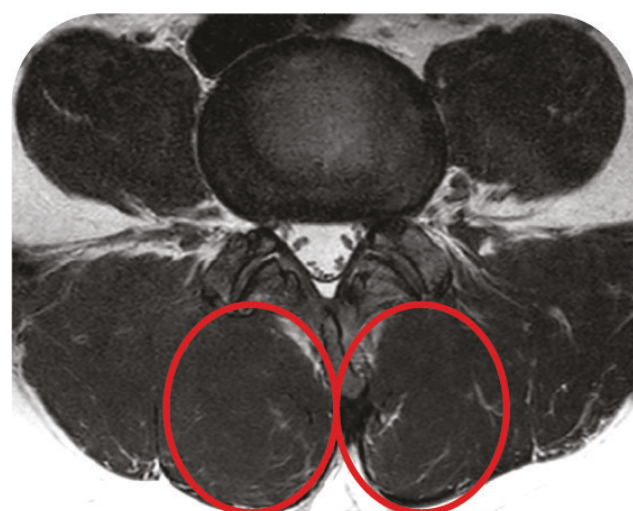
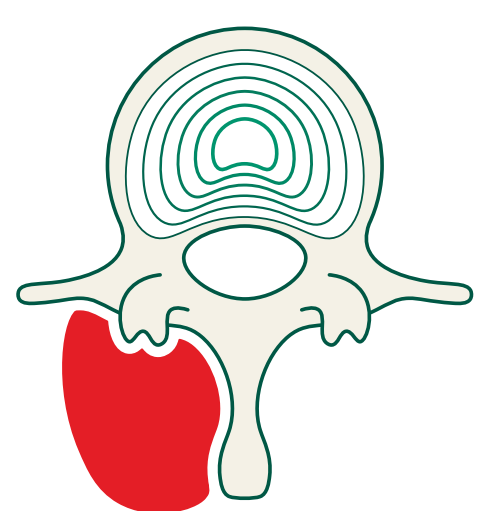
- Check for low back pain when muscles are “off”
- Check if muscles turned “on” by lifting leg
- Pain Reduction = Spinal Muscle Inhibition



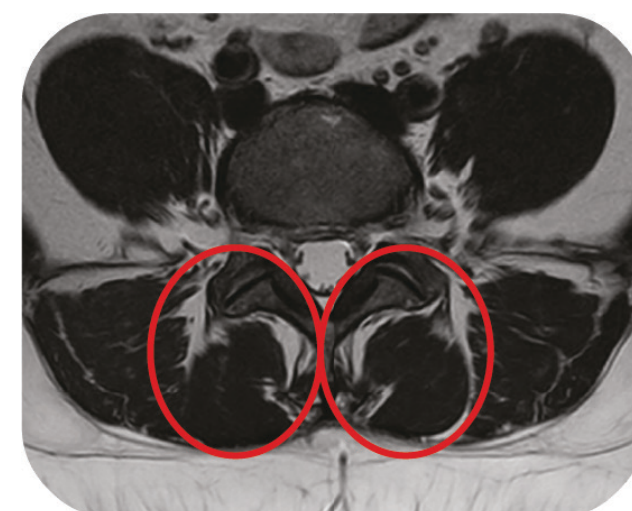
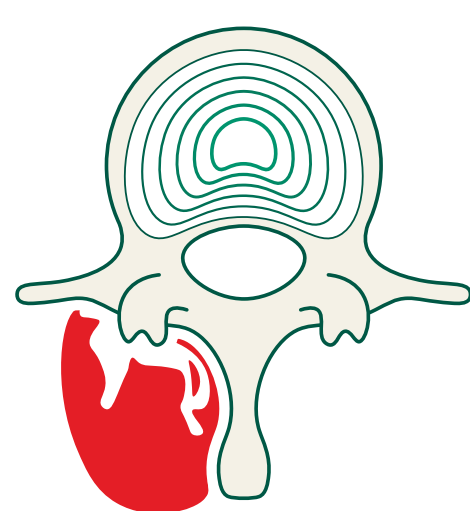
Multifidus Lift Test (MLT)
Test for multifidus activation

- Check for automatic function of multifidus muscle
- Arm lift should activate multifidus
- Muscle contraction determines if multifidus on/off

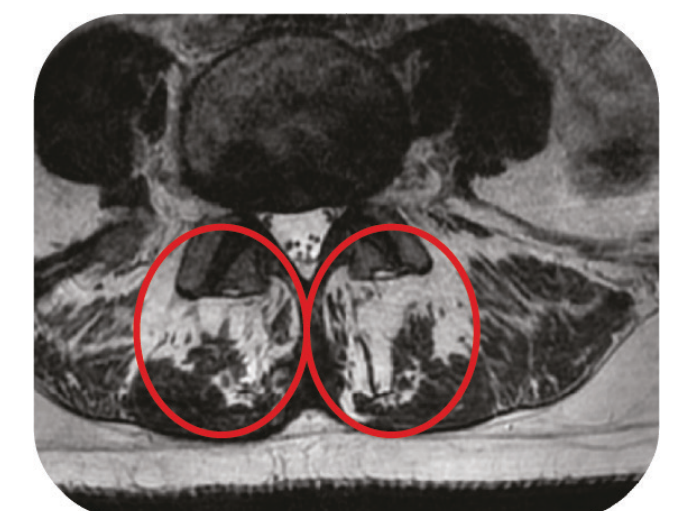
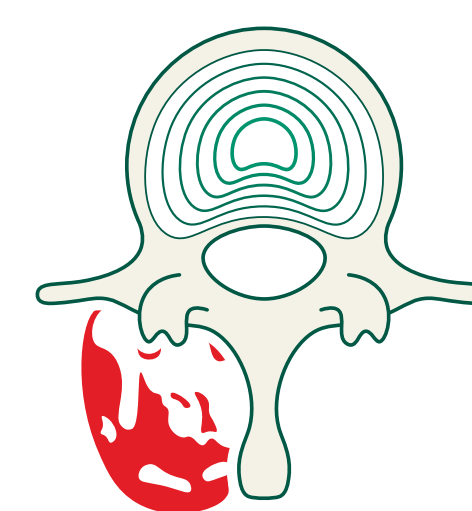
MRI: Multifidus Dysfunction



Normal Multifidus



Moderate Atrophy



Severe Atrophy

ReActiv8® For more information, visit WWW.REACTIV8.COM

USA Rx Only CAUTION: Federal law (USA) restricts this device to sale, distribution and use by or on the order of a physician. Refer to user manual for a complete listing of indications, contraindications, warnings, precautions, potential adverse events and directions for use.

The ReActiv8 System is indicated for bilateral stimulation of the L2 medial branch of the dorsal ramus as it crosses the L3 transverse process as an aid in the management of intractable chronic low back pain associated with multifidus muscle dysfunction, as evidenced by imaging or physiological testing in adults who have failed therapy including pain medications and physical therapy and are not candidates for spine surgery. Copyright © 2023 Mainstay Medical Limited. All rights reserved.

